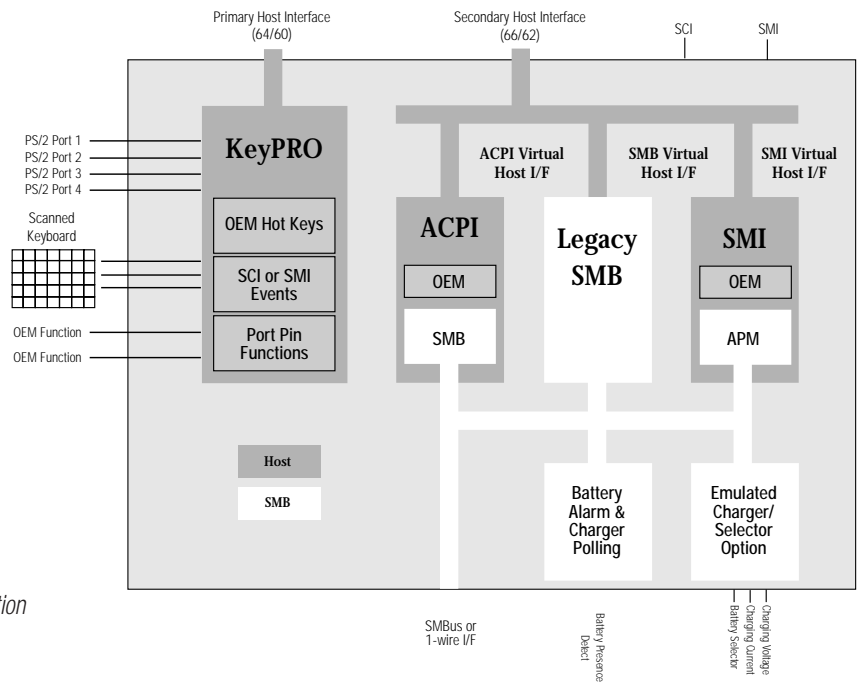


Keyboard Controller Firmware – SMC Tikki FDC37N972

Fast time to market with full featured keyboard firmware and development tool

Key Features

- Advanced development tool speeds time to market
- ACPI Embedded Controller - beyond the requirements
 - Supports 2nd host interface
 - 1 wire support using standard ACPI SMB table
 - Architecture minimizes ASL code requirements
- Any SMB/I2C device is accessible by legacy or ACPI
- Crisis recovery flash support
- Shared ROM - BIOS and keyboard firmware
- 4 Generic PS/2 ports including IBM PS/55 Numeric Keypad support
 - All 4 can be same device (e.g., 4 mice)
- LPC support - SMC "Kahuna"
- Support of Active PS/2 Multiplexing Specification
- Full technical documentation including sample BIOS code



Insyde Software has the PC industry's most advanced firmware solutions for the SMC Tikki FDC37N972 of Keyboard/Embedded controller. Insyde Software's Keyboard/Embedded controller firmware is highly flexible in supporting the most complex hardware designs in multiple environments (e.g., legacy and ACPI) without sacrificing any features, system performance, or requiring extra development.

With Insyde Software's advanced keyboard architecture and Keyboard Configuration Utility, an OEM can greatly reduce the keyboard firmware porting customization time. For example, with the Keyboard Configuration Utility, any "trigger event" (e.g., hot key sequence) can be mapped to one or a sequence of "control functions" (e.g., put the system in standby or enter quick lock).

AT and PS/2 8042 Compatible

- Host interface configured to provide exact IBM PS/2 and AT compatibility
- Supports 4 "hot plug" generic PS/2 Ports
 - Any combination of mouse, keyboard (AT, PS/2, AX Kanji, and OADG DOS/V keyboards), and/or IBM PS/55 numeric keypad
 - Three keyboards, mice, or any combination
 - Microsoft IntelliMouse

- Internal trackpad supported
- Supports external device Hot Plugged even if trackpad is missing
- Supports secondary host interface for power management or other system use
- 3 mouse modes (simultaneous, switched & auto) that offer flexibility in the handling of special mouse devices
- Mouse driver loads even if mouse is not present

Scanned Keyboard

- Assign any key to any scan code, or scan code string, with Insyde Software's Keyboard Configuration Utility
- Overlay mode controlled by
 - Host
 - Hot Keys
 - Num Lock LED
 - External keyboard presence
- Any combination of control keys - [Fn, Shift, Alt, Ctrl, Overlay, Num Lock] + [Any Key], can be mapped to any Scan Code, Control Function, or Hot Key



Smart Battery (SMB)

- 1 Wire support using standard ACPI SMB table
- Smart or control method battery
- Multiple batteries and chemistries
- No extra code needs to be written for BIOS SMI handler to convert ACPI access to 1 wire legacy command.
- Dallas 1 wire
- Any SMB/I²C device is accessible in legacy or ACPI modes
- Polling for battery to charger and battery to host alarms
- Polling of selector and charger for battery/AC change

ACPI

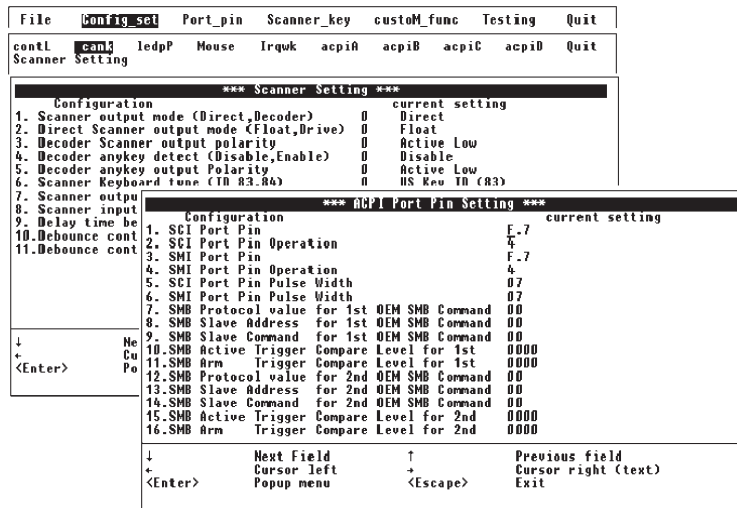
- Full support of EC (Embedded Controller) Command Set
- Virtual host interface through 62/66h
- SMBus Host Controller Interface
- ACPI space overlap with configuration table
- SCI Event Generation
- External Events (e.g., Thermal, Lid, Battery Support etc.)
- Notification Management
- OS Burst Mode Support
- SMI Processing
- SCI/SMI Task Queuing
- Any port pin can be controlled by ACPI

Firmware-controlled Power Minimization

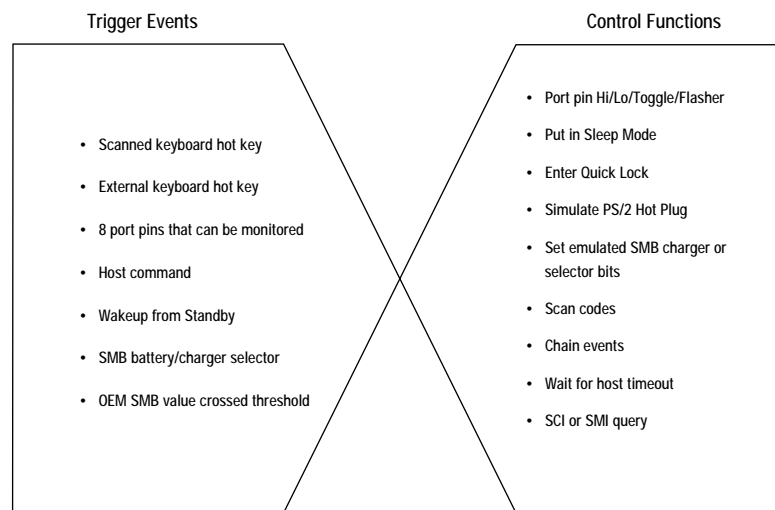
- Uses on-chip Idle Mode between keystrokes and Sleep Mode in system Suspend

Keyboard Configuration Utility

Insyde Software's Keyboard Configuration Utility allows the engineer to customize virtually any feature of Insyde Software's Keyboard Controller Firmware, without requiring the modification of source code. This greatly speeds up the customization and testing time and improves the quality of the end product.



Any Trigger Event can be mapped to any Control Function



Insyde Software — USA

1800 West Park Drive
Westborough, MA 01581
Tel: (508) 366-7800 • Fax: (508) 366-0500

Insyde Software — Taiwan

4F, No. 137, Chien Kuo N. Rd. Sec. 2
Taipei, Taiwan, R.O.C.
Tel: 02-2506-1289 • Fax: 02-2506-7287

www.insydesw.com • getinfo@insydesw.com

©2000 Insyde Software Corp. All rights reserved. Printed in USA. The contents of this document is subject to change without notice. All other trademarks or tradenames are property of their respective holders.